



 **unidrain**<sup>®</sup>

INSPIRATION | UK





## WORLD CLASS DANISH DESIGN

In 2003, unidrain® was the first company in the world to develop a line drain to be placed against the wall in the shower cubicle. Back then, high-end floor drain design was a new and revolutionary concept. In just a few years, unidrain® developed into one of the leading floor drain manufacturers. Ten years later, unidrain® has won many international design awards and is represented in over 30 countries around the world.



for HighLine



HighLine floor drain | Custom  
GlassLine shower screen | transparent  
GlassLine shower door  
GlassLine top rail | steel





## HIGHLINE

**d** DANISH  
DESIGN  
AWARD  
WINNER 2010/11

**if**  
product  
design  
award  
2010









HighLine floor drain | Panel frosted glass white

The traditional grating is replaced in the HighLine range by a panel in three different formats:

WITH FRAME

FRAMELESS



CUSTOM

Glue own material such as matching floor tile on the base



PANEL

Brushed stainless steel, brass, copper, black and frosted glass



CASSETTE

Ideal for terrazzo for instance

Using HighLine Custom with no frame achieves a discreet, timeless and exclusive look. Only the floor and wall tiles are visible, and water from the shower is led down into a slit in the floor.



HighLine floor drain | Custom frameless







HighLine floor drain | Panel in brushed steel with frame

GlassLine shower screen | Transparent

GlassLine shower base | Stripe



## CLASSICLINE





## 10 YEAR ANNIVERSARY GRATING ANNIVERSARIO

unidrain® celebrated its 10th anniversary in 2013, extending its design portfolio with a new ClassicLine grating: Anniversario.





ClassicLine is the original design range from unidrain®, and consists of frame and grating. Six elegant and timeless designs in brushed stainless steel ensure a solution to suit any taste.

COLUMN



STRIPE



ANNIVERSARIO



INCA



CLASSIC



SQUARE



## GLASSLINE







HighLine floor drain | Custom  
GlassLine shower screen | Random



1



2



3



4

1. ClassicLine floor drain | Column  
GlassLine shower screen | Column
2. GlassLine shower screen | Transparent  
GlassLine top rail | Steel  
GlassLine shower door
3. ClassicLine floor drain | Square  
GlassLine shower screen
4. HighLine floor drain | Panel with frame  
GlassLine shower base | Stripe



HighLine floor drain | Panel with frame  
GlassLine shower screen | Transparent



unidrain®'s shower screens are solidly mounted with no visible screws or brackets. The strong glass screen almost floats in its discreet steel frame along the floor and walls. Our shower screens are transparent or with exclusive decoration in silkscreen print. As the finishing touch, we produce an exclusive shower base, shower door and top rail designed in the same style as the shower screen and floor drain. All glass components have a special nano coating finish minimising the need for cleaning.

GlassLine shower screen | Transparent  
GlassLine top rail in steel  
ShowerLine



## BESPOKE (MODULE 1100)





ClassicLine Bespoke (Module 1100) | Column

HighLine Bespoke (Module 1100) | Custom

39



unidrain® Bespoke (Module 1100) is the flexible solution for any size of bathroom. unidrain® Bespoke makes it possible to produce unidrain® floor drains in any length and along several walls. This flexibility makes Bespoke the ideal solution for e.g. hotels, sports centres, schools and wellness facilities, or for an exclusive private bathroom. Can be installed using ClassicLine and HighLine.



## CORNER DRAIN



HighLine corner drain | Panel with frame



A corner drain is a discreet solution for bathrooms and utility rooms with limited space. They are significantly smaller than the equivalent floor drains on the market. Furthermore, they are placed in the corner against the walls, creating more space in the shower cubicle.

ClassicLine corner drain | Classic

ClassicLine corner drain | Anniversario

ClassicLine corner drain | Column



HighLine corner drain | Custom frameless



## SOAP SHELVES

Our elegant soap shelves are designed to complement the ClassicLine floor drain. They are available in linear and corner models.



## MATLINE



The Nordic climate is a challenge, with snow, rain, mud and slush for much of the year. That can make it hard to keep your home presentable all the time. The unidrain® MatLine system is a highly functional and elegant solution to an everyday problem. MatLine is mounted into the floor of your hall or utility room. The intelligent mat is connected to the existing drain system to get rid of excess water and dirt. Dry dirt and sand can be easily vacuumed.









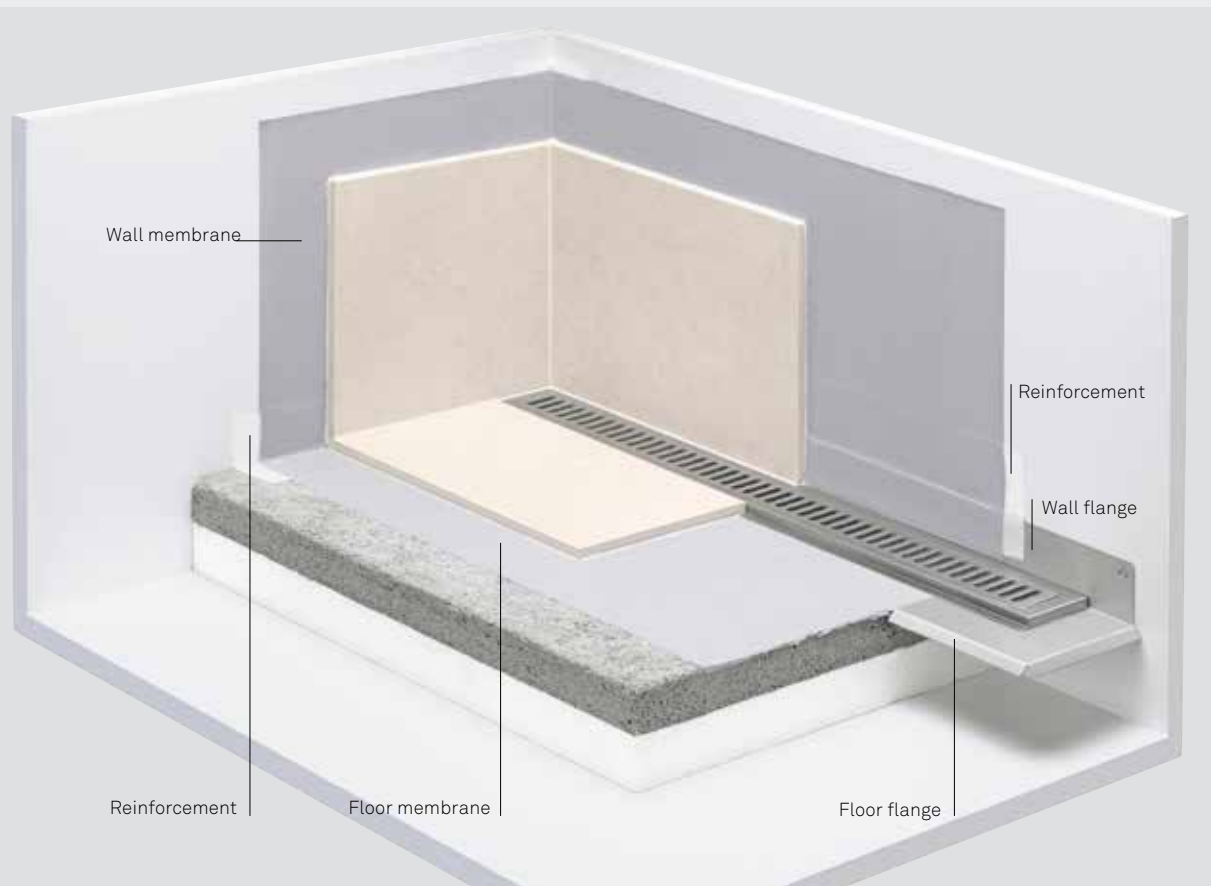


The MatLine mat system is Danish design at its best. Stylish and exclusive on the surface, completely functional underneath. The sand trap retains sand and gravel, with water and slush led directly to the drain.

## TECHNICAL DETAILS

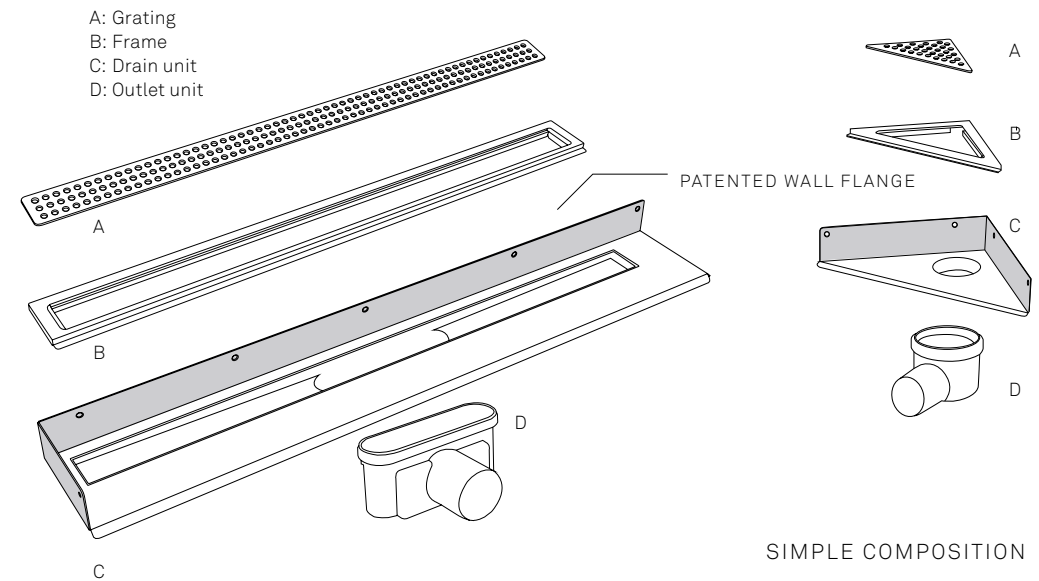


HighLine floor drain | Panel brass



### CONCRETE STRUCTURES

unidrain® is tested and approved for use in all types of floors in tiled wetrooms - whether heavy concrete construction or light wooden lath. For all structures, the materials and building methods used must be appropriate and approved.



unidrain®'s floor drain is an intelligent and functional solution. The system consists of drain unit, outlet unit, frame and grate/panel and is available in line and corner versions.

The two design ranges ClassicLine and HighLine represent the upper and visible part of the drain. The drain unit and outlet unit are the same, regardless of which of the two ranges are used.

### SAFE INSTALLATION

unidrain® is placed directly against the rear wall. The vertical wall flanges are fixed to the wall and ensure a completely waterproof overlap with the membrane. Similarly, the horizontal floor flanges ensure the floor is waterproof by overlapping the floor membrane.

unidrain®'s unique construction is patented in Europe (no. 1287213) and patent-applied for in a number of countries all over the world.

unidrain® is a registered trade mark.

EN 1253



VA 2.42/178972

DIN 4109



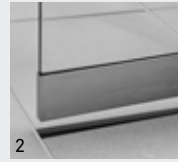
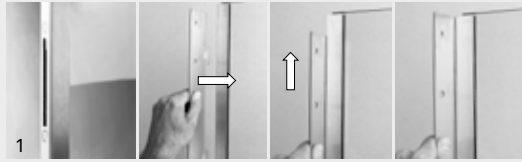
VDI 4100



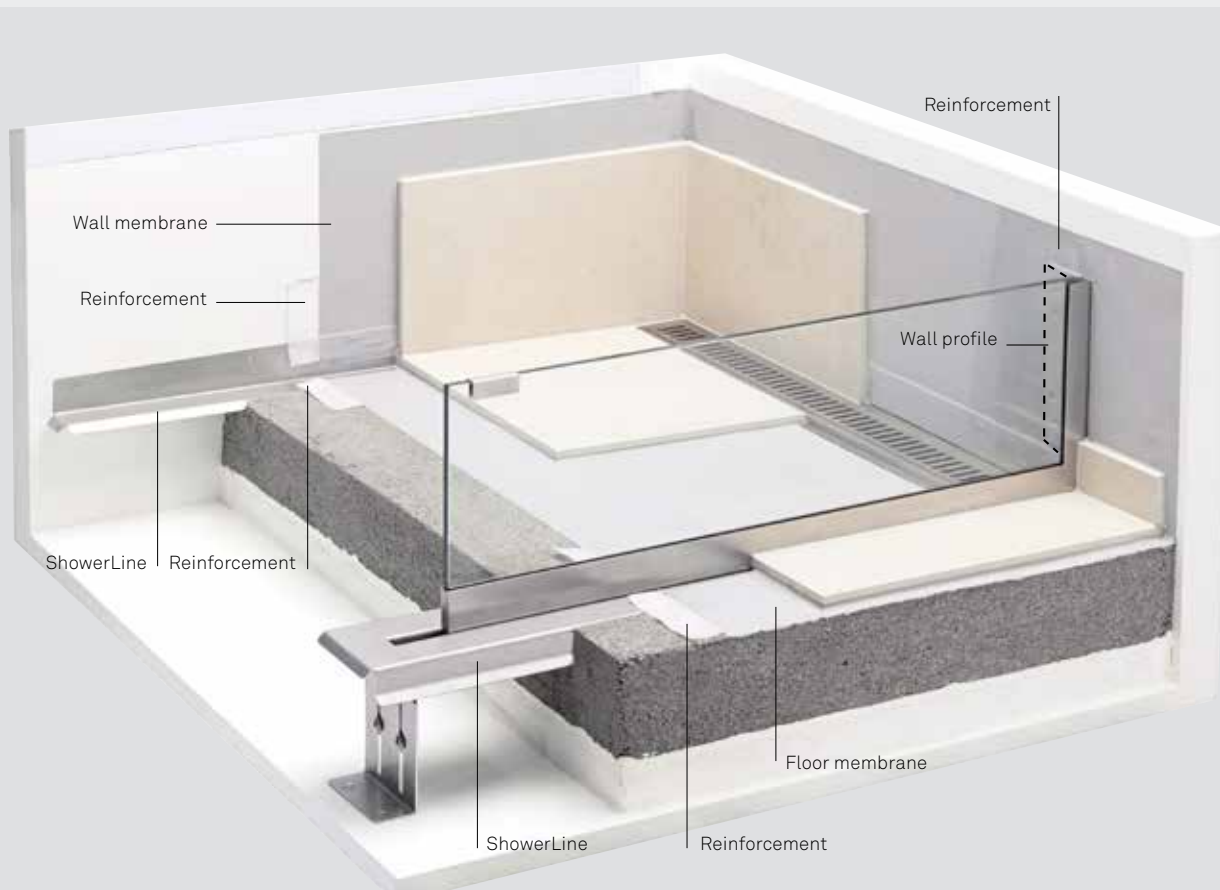
SIA 181







1. Mounted on rail on the wall.  
 2. Can be mounted before or after tiling.  
 NB:  
 If the screen is damaged, it can be easily replaced.



#### TECHNICAL ADVANTAGES THAT MAKE A DIFFERENCE

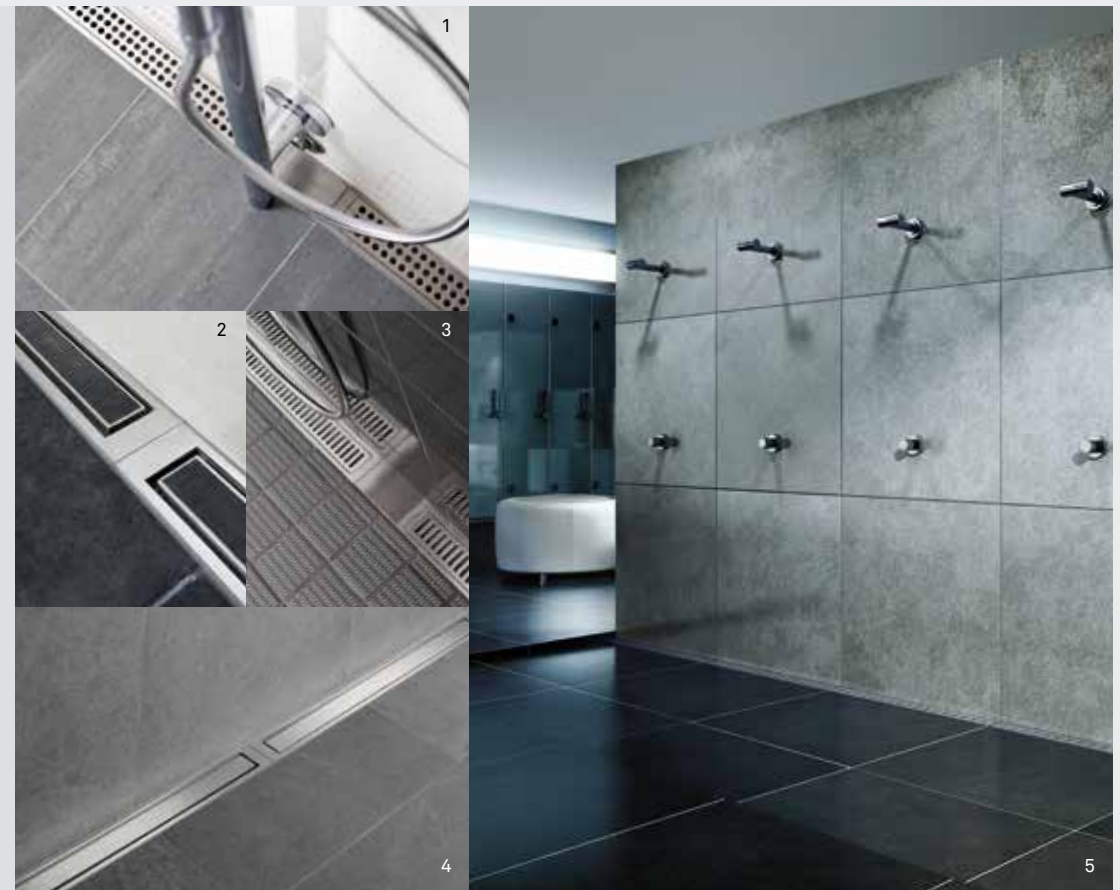
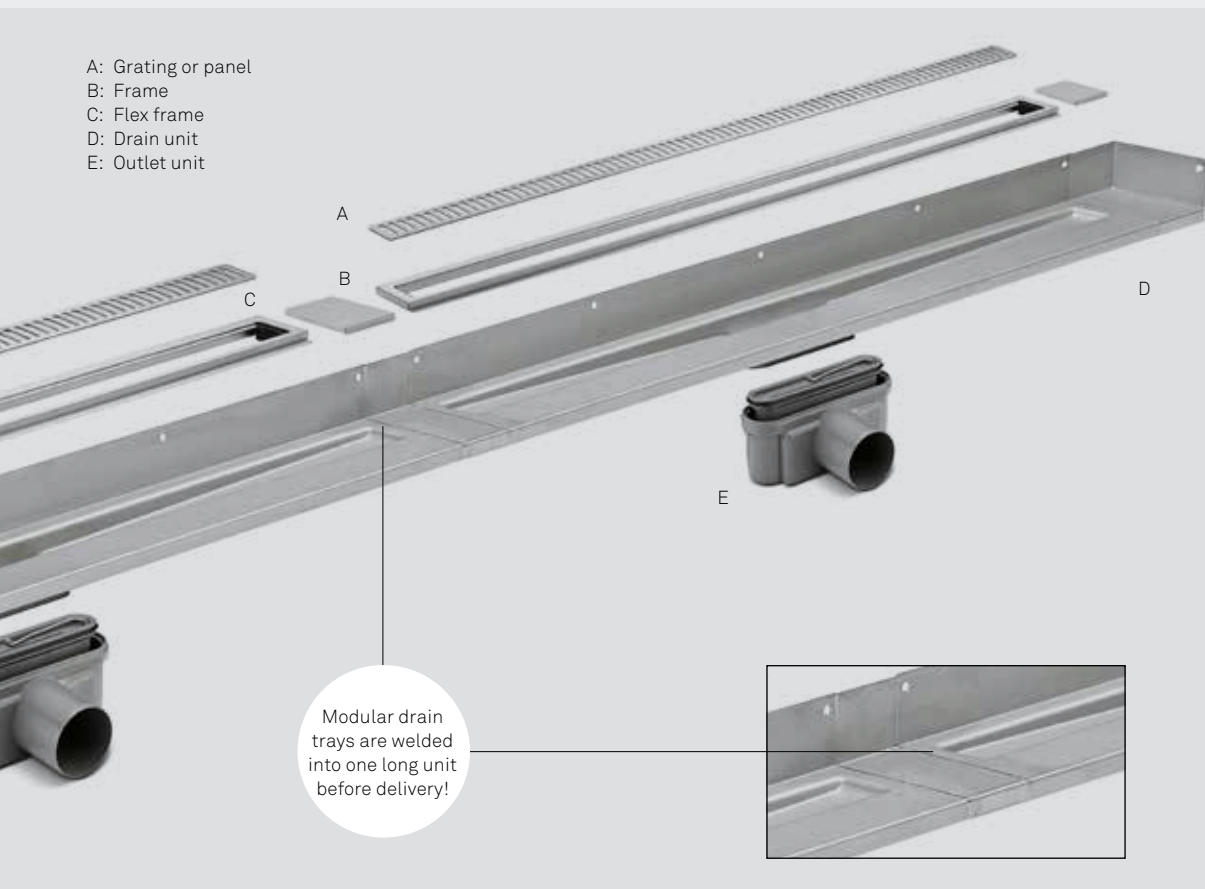
- Mounted without visible screws or brackets
- Embedded firmly in the floor - no risk of it loosening in the future
- Special nano technology coating on the glass to minimise cleaning
- No step between shower area and floor
- ShowerLine unit provides the correct slope in the shower niche, preventing water damage
- The entire system is 100% waterproof, when installed correctly

#### INSTALLATION PRINCIPLE

The wall profile is screwed to the back wall and the shower screen mounted on the profile and fitted into the track of ShowerLine. Flanges on wall and floor ensure a 100% watertight solution, and the tiles elegantly conceal the strong underlying installation. The screen is solidly secured to wall and floor, and cannot come loose in time.







Two modules without flex frames

One module tray that covers more than the double length of a standard model and without using flex frames to extend it.



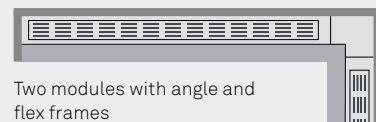
Two modules with flex frames

When the module tray has odd measurements, the excess space is filled using symmetrically-placed flex frames.



One module with flex frames

Retain the vertical end flanges even for odd measurements. Excess space is filled by flex frames on the sides.



Two modules with angle and flex frames

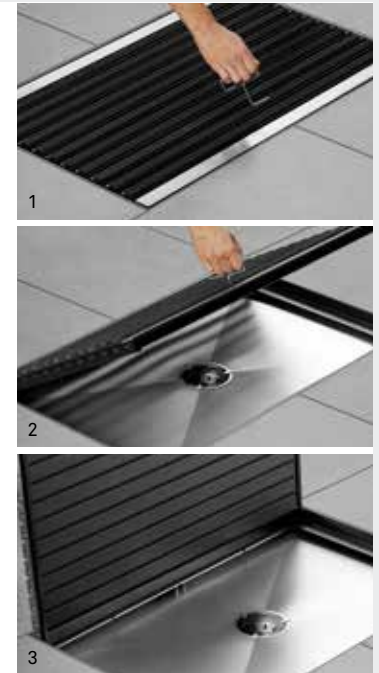
Module tray follows the corner of the shower area, allowing the fitting of shower heads on several walls.

1. ClassicLine Bespoke (Module 1100) | Classic
2. HighLine Bespoke (Module 1100) | Cassette with frame
3. ClassicLine Bespoke (Module 1100) | Column
4. HighLine Bespoke (Module 1100) | Panel with frame
5. ClassicLine Bespoke (Module 1100) | Stripe

unidrain® Bespoke (Module 1100) is a customised modular line drain system that is manufactured to order. Modular line drains can be several meters long and are therefore ideal for institutions, changing rooms and large bathrooms.

Outlet units, frames and gratings are taken from the permanent range. This means that frames and gratings are placed end-to-end, making maintenance easy and manageable. A number of outlet units are also used to ensure as high capacity and as low construction height as possible.





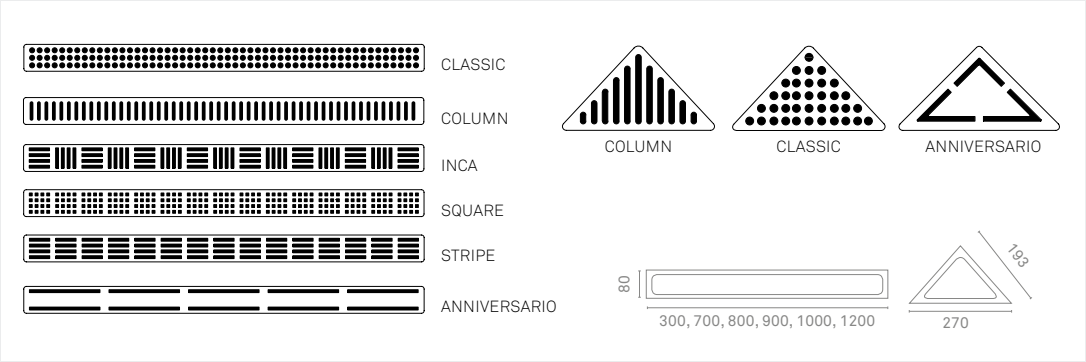
To raise the mat, use the hook (supplied). When the mat is raised, it locks automatically in the raised position.

## AN INTELLIGENT CHOICE

- Stylish Danish design
- Minimises dirt in the home
- Easy to clean
- Connects directly to drainage system
- Flexible system, where the height can be adjusted depending on the thickness of the tiles
- UV and chemical resistant nylon brushes that can withstand many years of normal use
- Intelligent brushes, which straighten after use

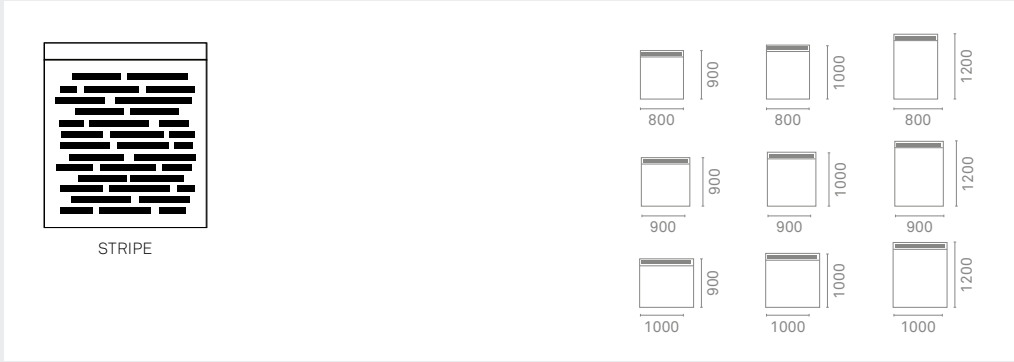
MatLine is useful and relevant in every type of building.

The intelligent mat system consists of four parts: Mat, frame, strainer and fitting. A hook is supplied to make raising the mat easier. The mat is flush with the surrounding floor and surrounded by a slim frame in brushed stainless steel. There is a strainer under the mat to catch sand and gravel. Below that is the fitting, which is mounted into the floor. Height-adjustable supports are available to order to facilitate the casting process.



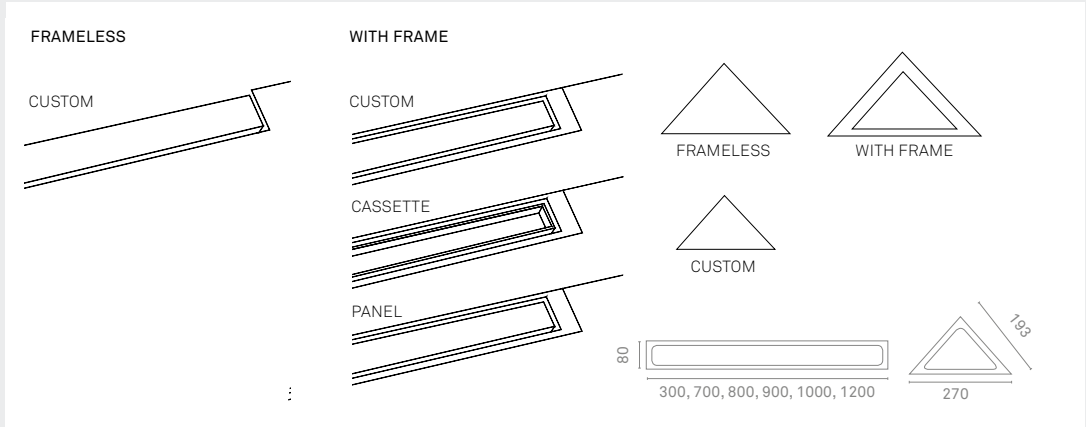
CLASSICLINE

**Description:** To ensure a snug fit, the grating is placed on a countersunk bed in the frame (mandatory).  
**Material:** 3 mm solid brushed stainless steel (AISI 304).



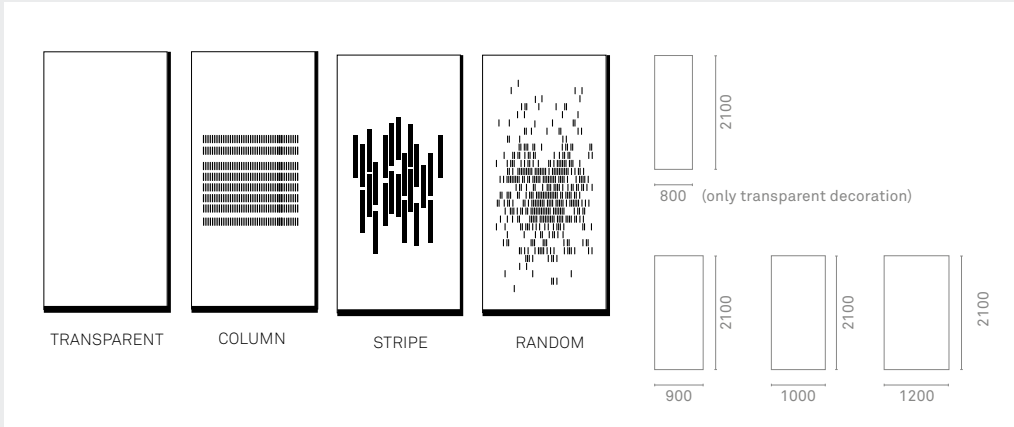
GLASSLINE  
SHOWER BASE

**Description:** Used instead of floor tiles in the shower niche.  
**Material:** A combination of glass and stainless steel. The surface has an anti-slip decoration.



HIGHLINE

**Description:** Frame is mandatory for Cassette and Panel and emphasises the exclusive design. Frame is optional for Custom.  
**Material:** 3 mm solid brushed stainless steel (AISI 304) and frosted glass.



GLASSLINE  
SHOWER SCREENS

**Description:** Silkscreen decoration applied to the outside of the screen.  
**Material:** Brushed stainless steel (AISI 304) with 10 mm hardened float glass.

Unidrain A/S  
Farum Gydevej 71  
DK-3520 Farum

T +45 3910 1010  
F +45 3910 1020  
[info@unidrain.com](mailto:info@unidrain.com)  
[www.unidrain.com](http://www.unidrain.com)

